



## Trail Tree Newsletter

### October 2017

This is Volume 38 of the Quarterly Trail Tree Project Newsletter. We hope the topics in this newsletter will be of interest to you. If you want us to report on other things, just let us know and we will be happy to do that. Below is all the latest news.

### Trail Tree (TT) Database

#### *Trail Tree Database*

The Trail Tree submittals were going slow until a lady published an article on the Marker Trees which got put into Facebook with a link to our web site and all heck broke loose. Trees were being submitted from all over the country and we got so many hits on our web site, we exceeded the allowable band width and our web site host shut the web site down. We are now back up and trying to get all the trees processed and into the database but we have a lot of work still to be done. Also, this past summer, we traveled throughout the west doing research and captured the data for a large number of Marker Trees.

#### *Trees of Interest*

I've selected some of trees from all over the United States submitted in the last few months to show the extent of Marker Trees nationwide. As I mentioned in the last newsletter, we are learning more about interpreting the trees and learning to look for common configurations which help to understand their purpose.

#### **Burial Trees**

The first three trees shown are what has become known as one form of a Burial tree. These trees have a very distinctive shape and are used for marking grave locations. Note that the trees from PA, KY and Iowa are almost identically bent from three different tribes. Thus, it is apparent that the Indians shared knowledge about tree bending configurations and they all used this knowledge to mark burial sites.



**PA Tree**





**KY Tree**



**Iowa Tree**

### **NC Trees**

The two NC trees are of a unique configuration. One is marking a site near Waynesboro, NC whereas the other one is near Cashiers, NC. The tribal elders told us if the tree was not bent horizontally, they would bend it down at a 45-degree angle.



**NC Tree**



**NC Tree**

### **AL Tree**

This next tree is a new configuration that has been discovered this year in AL and we have now seen them elsewhere. This tree shown on the next page is what we are not referring to as a “spirit tree.” We believe they may be marking ceremonial places used by the Indians. This unique spiral pattern must have been difficult to create and surely it took years to accomplish this type bent tree.



## CT Tree

The CT tree is believed to be marking a trail. It is amazing that with all the urban renewal, this tree has remained. Note the bump on the horizontal limb of the tree. There is likely a symbolism for this bump but we do not know what that might be.



**CT Tree**



**Spiral Tree - AL**

## WVA Tree

The WVA tree is another of those unique bent trees. We believe this one is marking a trail junction with the trail heading in different directions 90 degrees apart.

## CO Tree

The next tree is one of the most unique trees found in a while. This one was located in CO this summer while working with our colleagues there. The tree is a ponderosa pine because there are no hardwood trees in the area where the tree is located and the Ute bent ponderosa pines to mark locations.

The tree is bent like many typical bent trees with a horizontal arm followed by a vertical arm bent at 90 degrees to the horizontal arm. The difference in this tree is it had four other trees protecting it (one had been cut down) so it was determined to be a very special purpose tree. All Marker Trees have an associated underground stream under the tree as did this one. But some trees have Earth Energy Lines (gamma radiation) connected with them and this tree has two. The tree purpose was determined to be related to healing ceremonies associated with



**WVA Tree**



pregnancies. It is hard to see in the picture but underneath the horizontal arm is a large bump representing, we believe, a pregnant woman.

### **KY Tree**

The tree sent in from KY is one of the oldest found in a while. This tree is a little over 40 inches in diameter so it is quite old. This tree is located in a state park.

### **NY Tree**

We have been receiving trees from the NY area over the past several years and here is another one that is a maple tree.



**CO Healing Tree**



**KY Tree**



**NY Tree**

### **Indian Heritage Sites Mapping Program**

In the last several newsletters, we reported on our improved abilities to locate and map Indian sacred sites using dowsing rods. We have to be somewhat careful with this methodology as it cannot be scientifically proven. However, after briefing Dr. James Jefferson, Southern Ute elder, this summer, he told us what we were doing is Native Science and introduced us to the teachings of numerous tribal elders



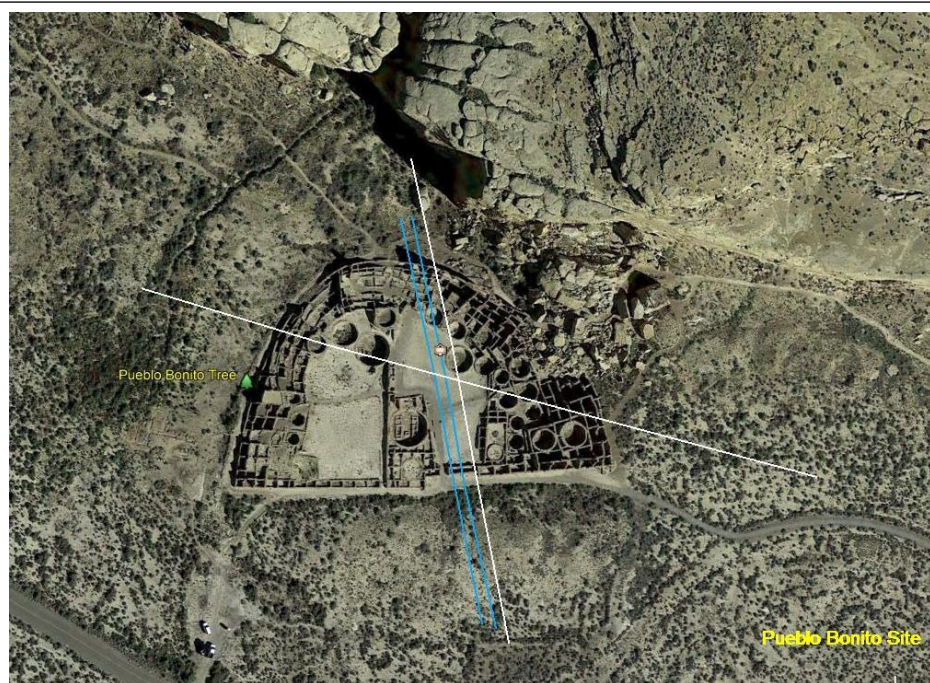
who are also university professors teaching about this way of analyzing Indigenous sites. If you want to learn more about Native Science go to these links to learn or Google the term.

Dr. Little Bear: <https://www.youtube.com/watch?v=gJSJ28eEUjI>

Dr. Cajete: <https://www.youtube.com/watch?v=nFeNIOgIbzw>

This summers' research excursion was 5,200 miles researching 22 sites in TX, NM, CO and ILL. We used our dowsing capabilities to investigate each site looking for underground water and earth energy lines associated with each site. We also did a lot of studying of the surface artifacts to learn as much as we could about each site. While in NM and parts of CO, we had Bob Wells with us to film the work at each site. As a part of our trip, we visited numerous Pueblo sites in NM and found some interesting similarities in each of the sites. The Pueblo Bonito site in Chaco Canyon is one of the most sacred sites to the Pueblo. It was used for ceremonies and as a housing site for the Pueblo people. Underground water and energy lines were found at the site indicating it is a sacred site.

Also in Chaco Canyon is a Giant Kiva that has a ceremonial purpose which we believe was for healing. Shown on the next page, you can see that the Kiva has six energy lines going through the site junctioning in the center of the Kiva. Although no written records exist on how this site was used, we believe a person who needed healing from some ailment or disease was placed in the center of the Kiva where the most energy was located and perhaps that provided the healing.

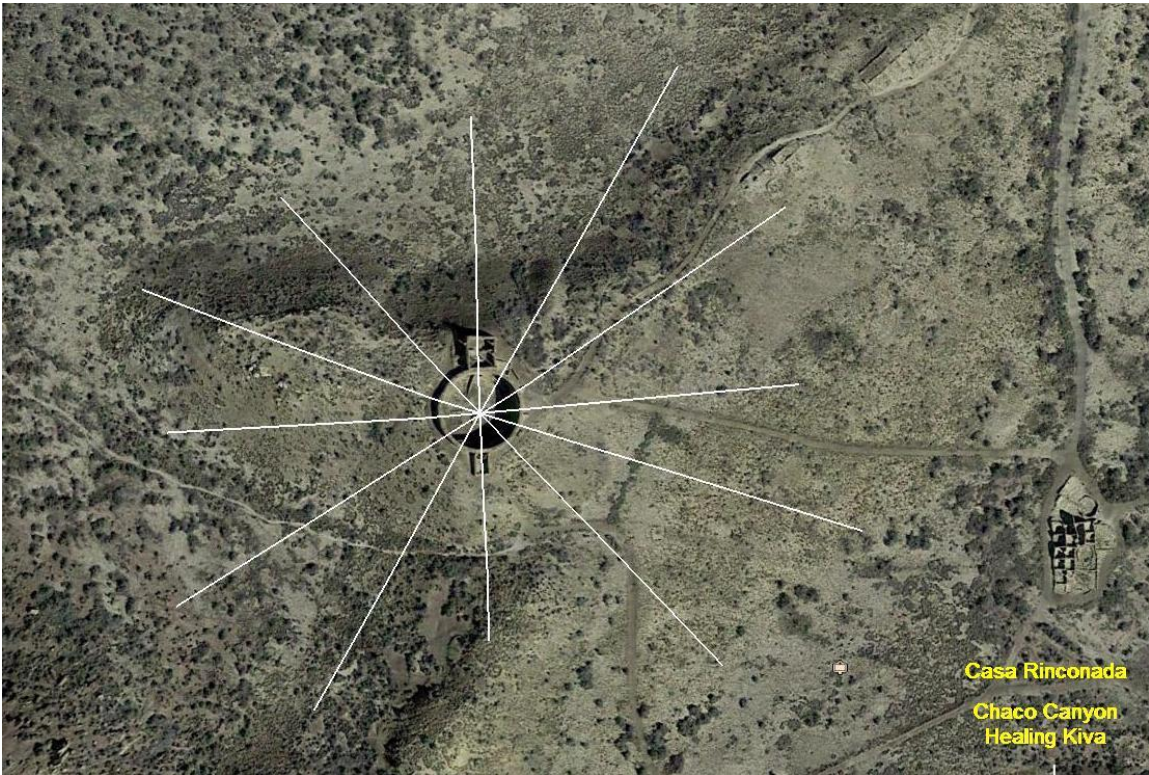


**Chaco Canyon Pueblo Bonito Site with Associated Underground Water and Earth Energy Lines**

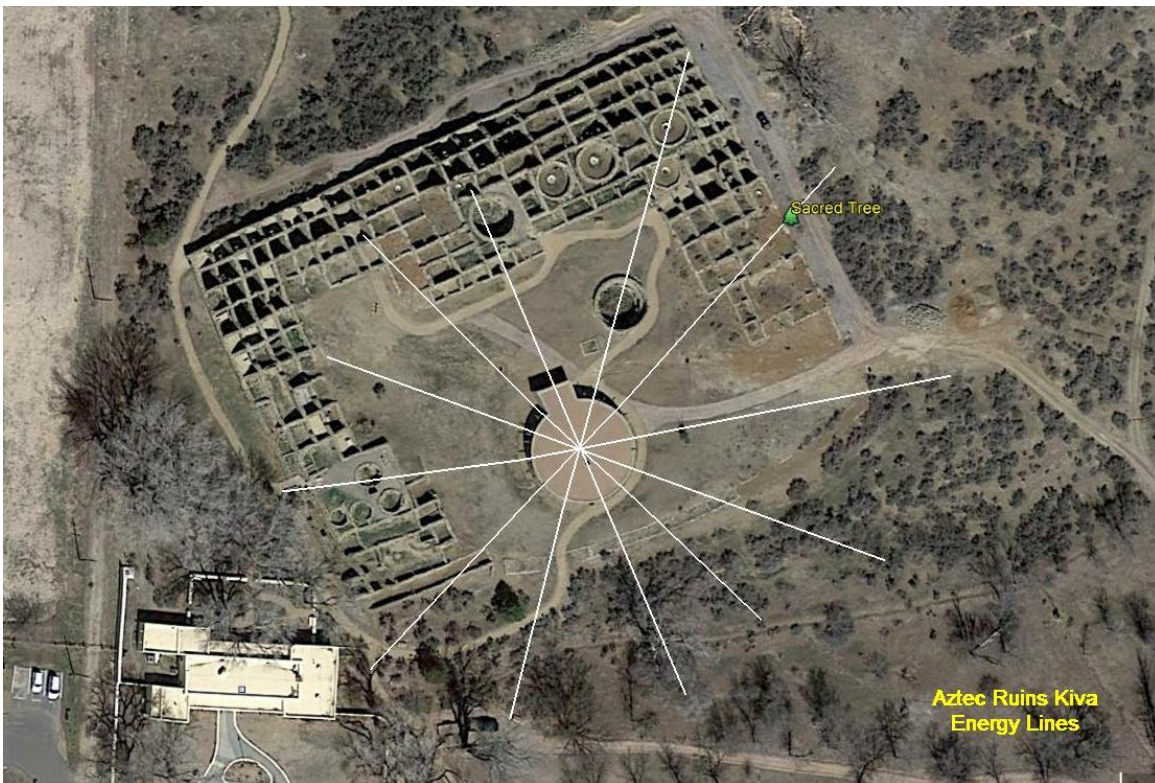
About 50 miles north of Chaco Canyon in the town of Aztec, NM where another set of Pueblo ruins exist that appear to be somewhat identical to Pueblo Bonito. At this site, the Giant Kiva is integral with the housing site. This Kiva is different from the one at Chaco Canyon in that it had a roof and was above ground where as the one in Chaco Canyon was buried in the ground and had no roof. The archaeologists believe the Giant Kiva at Aztec was primarily used for solstice and lunar event celebrations. However, in measuring the feature, it also had six Earth Energy Lines associated with the facility identical to Chaco Canyon. The site also has an associated underground stream with the facility indicating its sacredness.

We visited the Pueblo village sites in Mesa Verde, CO and found energy lines associated with each cliff dwelling site.





**Casa Rinconada Chaco Canyon Giant Kiva**



**Aztec Ruins Site, Aztec, NM**

## ***Mystery of the Trees* Presentations and Book Signings**

We took a break from making presentation after the last newsletter but are now back on the road. We did one presentation in Atlanta in Sept.; have two for October and a final one in November. After that last presentation, we will take a break until 2018. We already have presentations scheduled in 2018 with the first on 6 January. 2018.

If you want to schedule a presentation for 2018, contact us at our email address [mountainman93@gmail.com](mailto:mountainman93@gmail.com) to schedule a time. If you would like a list of the presentations, contact me at the same email address. The presentations are offered for free but traveling to overnight venues is not feasible unless a large audience of at least 60 people can be guaranteed.

## **Facebook**

To stay in touch with our activities in between Newsletter issues, follow us on our Facebook page at [www.facebook.com/mysterytrees](https://www.facebook.com/mysterytrees). This site provides a running account of our weekly activities. Please log on to the site and **LIKE** the page. This opens our information to a larger audience and helps educate folks about the program. Currently, we have over 1,620 **LIKES**. We are now striving for the 2,000 mark. A lot of dialog is now going on between the followers of the site who are sharing their findings across the nation.