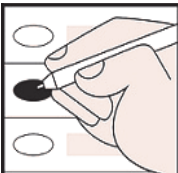




OFFICIAL ABSENTEE / PROVISIONAL / EMERGENCY BALLOT

Pickens County, Georgia
Precinct: 115-Tate
Democratic General Primary and Nonpartisan General Election - May 24, 2022



To Vote:
1. Use Black or Blue Ink to mark the ballot.
2. Completely fill in the empty oval to the left of the candidate name or choice in all races you wish to vote.
3. If voting for a Write-In candidate, completely fill in the oval to the left of the Write-In selection, then write the name of the Write-In candidate in the space provided.

Warning
Do NOT use red ink or felt tip pen to mark ballot.
Do NOT circle, underline or mark through choices.
Do NOT use check marks or X to mark ballot.
Do NOT mark more choices per race than allowed.
Do NOT sign, cut, tear or damage the ballot.

If you make a mistake or change your mind on a selection:
A. Do not attempt to mark through the selection or attempt to erase. Write "Spoiled" across the ballot AND across the return envelope.
B. Mail or return the spoiled ballot and envelope to your county board of registrars; a new official absentee ballot will be mailed to you.
If you decide to vote in-person: Surrender the ballot to the poll manager at an early voting site within your county or the precinct to which you are assigned. You will then be permitted to vote a regular ballot.

"I understand that the offer or acceptance of money or any other object of value to vote for any particular candidate, list of candidates, issue, or list of issues included in this election constitutes an act of voter fraud and is a felony under Georgia law." [O.C.G.A. 21-2-284(e), 21-2-285(h) and 21-2-383(a)]

| | | |
|--|--|--|
| <div>For United States Senate (Vote for One)</div> <div><div>Tamara Johnson-Shealey</div><div>Raphael Warnock (Incumbent)</div></div> | <div>For Secretary of State (Vote for One)</div> <div><div>Dee Dawkins-Haigler</div><div>John Eaves</div><div>Floyd Griffin</div><div>Bee Nguyen</div><div>Michael Owens</div></div> | <div>For Commissioner of Labor (Vote for One)</div> <div><div>William "Will" Boddie, Jr.</div><div>Thomas Dean</div><div>Nicole Horn</div><div>Lester G. Jackson III</div><div>Nadia Surrency</div></div> |
| <div>For Governor (Vote for One)</div> <div><div>Stacey Abrams</div></div> | | |
| <div>For Lieutenant Governor (Vote for One)</div> <div><div>Erick E. Allen</div><div>Charlie Bailey</div><div>Tyrone Brooks, Jr.</div><div>Tony Brown</div><div>Kwanza Hall</div><div>Jason T. Hayes</div><div>Derrick L. Jackson</div><div>R. Malik</div><div>Renitta Shannon</div></div> | <div>For Attorney General (Vote for One)</div> <div><div>Jennifer "Jen" Jordan</div><div>Christian Wise Smith</div></div> | <div>For Public Service Commissioner District 2 (To Succeed Tim Echols) (Vote for One)</div> <div><div>Patty Durand</div><div>Russell Edwards</div></div> |
| | <div>For Commissioner of Agriculture (Vote for One)</div> <div><div>Winfred Dukes</div><div>Nakita Hemingway</div><div>Fred Swann</div></div> | <div>For Public Service Commissioner District 3 (To Fill the Unexpired Term of Chuck Eaton, Resigned) (Vote for One)</div> <div><div>Shelia Edwards</div><div>Chandra Farley</div><div>Missy Moore</div></div> |
| | <div>For Commissioner of Insurance (Vote for One)</div> <div><div>Raphael Baker</div><div>Janice Laws Robinson</div><div>Matthew Wilson</div></div> | <div>For United States House of Representatives - District 11 (Vote for One)</div> <div><div>Antonio Daza</div></div> |
| | <div>For State School Superintendent (Vote for One)</div> <div><div>Currey Hitchens</div><div>Jaha V. Howard</div><div>James Morrow, Jr.</div><div>Alisha Thomas Searcy</div></div> | <div>For State House of Representatives - District 11 (Vote for One)</div> <div><div>Kayla L. Hollifield</div></div> |
| | | <div>DEMOCRATIC PARTY QUESTIONS</div> <div>- 1 -</div> <div>Should the United States remove obstacles to economic advancement by forgiving all student loan debt?</div> <div><div>Yes</div><div>No</div></div> |

Turn Ballot Over To Continue Voting

| | | |
|---|---|---|
| <div>- 2 -</div> <div>Should all Georgians have access to paid parental leave following the birth or adoption of a child?</div> <div><div><input type="radio"/> Yes</div><div><input type="radio"/> No</div></div> | <div>NONPARTISAN GENERAL ELECTION</div> <div><div>For Justice Supreme Court of Georgia (To Succeed Verda M. Colvin) (Vote for One)</div><div><div><input type="radio"/> Veronica Brinson</div><div><input type="radio"/> Verda M. Colvin (Incumbent)</div><div><input type="radio"/></div></div><div>Write-in</div></div> | <div>For Judge - Superior Court Appalachian Judicial Circuit (To Succeed John E. Worcester) (Vote for One)</div> <div><div><input type="radio"/> John Worcester (Incumbent)</div><div><input type="radio"/></div></div> <div>Write-in</div> |
| <div>- 3 -</div> <div>Should every three- and four-year-old in Georgia be given the opportunity to attend a high-quality preschool free of charge?</div> <div><div><input type="radio"/> Yes</div><div><input type="radio"/> No</div></div> | <div>For Justice Supreme Court of Georgia (To Succeed Shawn LaGrua) (Vote for One)</div> <div><div><input type="radio"/> Shawn Ellen LaGrua (Incumbent)</div><div><input type="radio"/></div></div> <div>Write-in</div> | |
| <div>- 4 -</div> <div>Should Georgia voters have the right to gather signed petitions to directly place questions on the ballot, whether to change the law or poll the public?</div> <div><div><input type="radio"/> Yes</div><div><input type="radio"/> No</div></div> | <div>For Justice Supreme Court of Georgia (To Succeed Carla W. McMillian) (Vote for One)</div> <div><div><input type="radio"/> Carla McMillian (Incumbent)</div><div><input type="radio"/></div></div> <div>Write-in</div> | |
| <div>- 5 -</div> <div>Should families earning less than \$150,000 per year receive an expanded tax credit to help cover the costs of raising children?</div> <div><div><input type="radio"/> Yes</div><div><input type="radio"/> No</div></div> | <div>For Judge Court of Appeals of Georgia (To Succeed Anne Elizabeth Barnes) (Vote for One)</div> <div><div><input type="radio"/> Anne Elizabeth Barnes (Incumbent)</div><div><input type="radio"/></div></div> <div>Write-in</div> | |
| <div>- 6 -</div> <div>Should the State of Georgia expand access to health care for over half a million Georgians by utilizing federal funds to expand Medicaid?</div> <div><div><input type="radio"/> Yes</div><div><input type="radio"/> No</div></div> | <div>For Judge Court of Appeals of Georgia (To Succeed Christopher McFadden) (Vote for One)</div> <div><div><input type="radio"/> Chris McFadden (Incumbent)</div><div><input type="radio"/></div></div> <div>Write-in</div> | |
| <div>- 7 -</div> <div>Should the State of Georgia expand voter access by increasing early voting opportunities, allow same-day voter registration, removing obstacles to voting by mail, and installing secure ballot drop boxes, accessible at all times, through Election Day?</div> <div><div><input type="radio"/> Yes</div><div><input type="radio"/> No</div></div> | <div>For Judge Court of Appeals of Georgia (To Succeed Trea Pipkin) (Vote for One)</div> <div><div><input type="radio"/> Trea Pipkin (Incumbent)</div><div><input type="radio"/></div></div> <div>Write-in</div> | |
| <div>- 8 -</div> <div>Should marijuana be legalized, taxed, and regulated in the same manner as alcohol for adults 21 years of age or older, with proceeds going towards education, infrastructure, and health care programs?</div> <div><div><input type="radio"/> Yes</div><div><input type="radio"/> No</div></div> | <div>For Judge - Superior Court Appalachian Judicial Circuit (To Succeed Mary Elizabeth Priest) (Vote for One)</div> <div><div><input type="radio"/> Mary Elizabeth Priest (Incumbent)</div><div><input type="radio"/></div></div> <div>Write-in</div> | |
| <div>- 9 -</div> <div>Should the State of Georgia incentivize the development of clean, renewable energy sources to support America's energy independence?</div> <div><div><input type="radio"/> Yes</div><div><input type="radio"/> No</div></div> | | |

