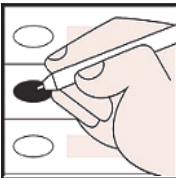




OFFICIAL ABSENTEE / PROVISIONAL / EMERGENCY BALLOT

Pickens County, Georgia  
Precinct: 115-Tate  
Republican General Primary and Nonpartisan General Election - May 24, 2022



To Vote:  
1. Use Black or Blue Ink to mark the ballot.  
2. Completely fill in the empty oval to the left of the candidate name or choice in all races you wish to vote.  
3. If voting for a Write-In candidate, completely fill in the oval to the left of the Write-In selection, then write the name of the Write-In candidate in the space provided.

Warning  
Do NOT use red ink or felt tip pen to mark ballot.  
Do NOT circle, underline or mark through choices.  
Do NOT use check marks or X to mark ballot.  
Do NOT mark more choices per race than allowed.  
Do NOT sign, cut, tear or damage the ballot.

If you make a mistake or change your mind on a selection:

- A. Do not attempt to mark through the selection or attempt to erase. Write **"Spoiled"** across **the ballot AND across the return envelope**.  
B. Mail or return the spoiled ballot and envelope to your county board of registrars; a new official absentee ballot will be mailed to you.

If you decide to vote in-person: Surrender the ballot to the poll manager at an early voting site within your county or the precinct to which you are assigned. You will then be permitted to vote a regular ballot.

"I understand that the offer or acceptance of money or any other object of value to vote for any particular candidate, list of candidates, issue, or list of issues included in this election constitutes an act of voter fraud and is a felony under Georgia law." [O.C.G.A. 21-2-284(e), 21-2-285(h) and 21-2-383(a)]

<div>For United States Senate (Vote for One)</div> <div><div><input type="radio"/> Gary W. Black</div><div><input type="radio"/> Josh Clark</div><div><input type="radio"/> Kelvin King</div><div><input type="radio"/> Jonathan "Jon" McColumn</div><div><input type="radio"/> Latham Saddler</div><div><input type="radio"/> Herschel Junior Walker</div></div>	<div>For Secretary of State (Vote for One)</div> <div><div><input type="radio"/> David C. Belle Isle</div><div><input type="radio"/> Jody Hice</div><div><input type="radio"/> T.J. Hudson</div><div><input type="radio"/> Brad Raffensperger (Incumbent)</div></div> <div>For Attorney General (Vote for One)</div> <div><div><input type="radio"/> Chris Carr (Incumbent)</div><div><input type="radio"/> John Gordon</div></div> <div>For Commissioner of Agriculture (Vote for One)</div> <div><div><input type="radio"/> Tyler Harper</div></div> <div>For Commissioner of Insurance (Vote for One)</div> <div><div><input type="radio"/> Ben Cowart</div><div><input type="radio"/> John King (Incumbent)</div><div><input type="radio"/> Patrick Witt</div></div> <div>For State School Superintendent (Vote for One)</div> <div><div><input type="radio"/> John D. Barge</div><div><input type="radio"/> Richard Woods (Incumbent)</div></div> <div>For Commissioner of Labor (Vote for One)</div> <div><div><input type="radio"/> Kartik Bhatt</div><div><input type="radio"/> Mike Coan</div><div><input type="radio"/> Bruce Thompson</div></div> <div>For Public Service Commissioner District 2 (To Succeed Tim Echols) (Vote for One)</div> <div><div><input type="radio"/> Tim Echols (Incumbent)</div></div>	<div>For Public Service Commissioner District 3 (To Fill the Unexpired Term of Chuck Eaton, Resigned) (Vote for One)</div> <div><div><input type="radio"/> Fitz Johnson (Incumbent)</div></div> <div>For United States House of Representatives - District 11 (Vote for One)</div> <div><div><input type="radio"/> Barry Loudermilk (Incumbent)</div></div> <div>For State Senate District 51 (Vote for One)</div> <div><div><input type="radio"/> Steve Gooch (Incumbent)</div></div> <div>For State House of Representatives - District 11 (Vote for One)</div> <div><div><input type="radio"/> Rick Jasperse (Incumbent)</div></div> <div>For County Commissioner District 1 (Vote for One)</div> <div><div><input type="radio"/> Josh Tippens</div><div><input type="radio"/> Rick L. Tucker</div><div><input type="radio"/> David Shouse</div><div><input type="radio"/> Robert Watson</div><div><input type="radio"/> Brian Cleghorn</div></div> <div>For County Board of Education Post 2 (Vote for One)</div> <div><div><input type="radio"/> Suzanne Neville Fowler</div><div><input type="radio"/> Steve Lowe</div></div> <div>For County Board of Education Post 3 (Vote for One)</div> <div><div><input type="radio"/> Amy L. Gibson</div></div>
---	--	--

Turn Ballot Over To Continue Voting

<b>For County Board of Education Post 5</b> (Vote for One)
<input type="radio"/> <b>Joe Wigington</b>
<b>REPUBLICAN PARTY QUESTIONS</b>
<b>- 1 -</b> The Biden administration has stopped building the border wall and illegal border crossings have dramatically increased. Should securing our border be a national priority?
<input type="radio"/> <b>Yes</b> <input type="radio"/> <b>No</b>
<b>- 2 -</b> Education is the largest line item in the state budget. Should education dollars follow the student to the school that best fits their need, whether it is public, private, magnet, charter, virtual or homeschool?
<input type="radio"/> <b>Yes</b> <input type="radio"/> <b>No</b>
<b>- 3 -</b> Florida has passed a law to stop social media platforms from influencing political campaigns by censoring candidates. Should Georgia pass such a law to protect free speech in political campaigns?
<input type="radio"/> <b>Yes</b> <input type="radio"/> <b>No</b>
<b>- 4 -</b> Two of the three current federal work visa programs are lottery based. Should federal work visas instead be issued on job skill?
<input type="radio"/> <b>Yes</b> <input type="radio"/> <b>No</b>
<b>- 5 -</b> Biological males who identify as females have begun competing in female sports. Should schools in Georgia allow biological males to compete in female sports?
<input type="radio"/> <b>Yes</b> <input type="radio"/> <b>No</b>
<b>- 6 -</b> To prevent ballot tampering, state law prohibits political operatives from handling absentee ballots once they have been marked by the voter. To protect the integrity of our elections, should the enforcement of laws against ballot tampering be a priority?
<input type="radio"/> <b>Yes</b> <input type="radio"/> <b>No</b>
<b>- 7 -</b> Absentee drop boxes are vulnerable to illegal ballot trafficking. Should absentee ballot drop boxes be eliminated?
<input type="radio"/> <b>Yes</b> <input type="radio"/> <b>No</b>

<b>- 8 -</b> Crime has dramatically increased throughout the country including in our capital city of Atlanta. Should the citizens of residential areas like the Buckhead community of Atlanta be allowed to vote to create their own city governments and police departments?
<input type="radio"/> <b>Yes</b> <input type="radio"/> <b>No</b>
<b>NONPARTISAN GENERAL ELECTION</b>
<b>For Justice Supreme Court of Georgia</b> (To Succeed Verda M. Colvin) (Vote for One)
<input type="radio"/> <b>Veronica Brinson</b>  <input type="radio"/> <b>Verda M. Colvin</b> (Incumbent)  <input type="radio"/> <b>Write-in</b>
<b>For Justice Supreme Court of Georgia</b> (To Succeed Shawn LaGrua) (Vote for One)
<input type="radio"/> <b>Shawn Ellen LaGrua</b> (Incumbent)  <input type="radio"/> <b>Write-in</b>
<b>For Justice Supreme Court of Georgia</b> (To Succeed Carla W. McMillian) (Vote for One)
<input type="radio"/> <b>Carla McMillian</b> (Incumbent)  <input type="radio"/> <b>Write-in</b>
<b>For Judge Court of Appeals of Georgia</b> (To Succeed Anne Elizabeth Barnes) (Vote for One)
<input type="radio"/> <b>Anne Elizabeth Barnes</b> (Incumbent)  <input type="radio"/> <b>Write-in</b>
<b>For Judge Court of Appeals of Georgia</b> (To Succeed Christopher McFadden) (Vote for One)
<input type="radio"/> <b>Chris McFadden</b> (Incumbent)  <input type="radio"/> <b>Write-in</b>
<b>For Judge Court of Appeals of Georgia</b> (To Succeed Trea Pipkin) (Vote for One)
<input type="radio"/> <b>Trea Pipkin</b> (Incumbent)  <input type="radio"/> <b>Write-in</b>

<b>For Judge - Superior Court Appalachian Judicial Circuit</b> (To Succeed Mary Elizabeth Priest) (Vote for One)
<input type="radio"/> <b>Mary Elizabeth Priest</b> (Incumbent)  <input type="radio"/> <b>Write-in</b>
<b>For Judge - Superior Court Appalachian Judicial Circuit</b> (To Succeed John E. Worcester) (Vote for One)
<input type="radio"/> <b>John Worcester</b> (Incumbent)  <input type="radio"/> <b>Write-in</b>

